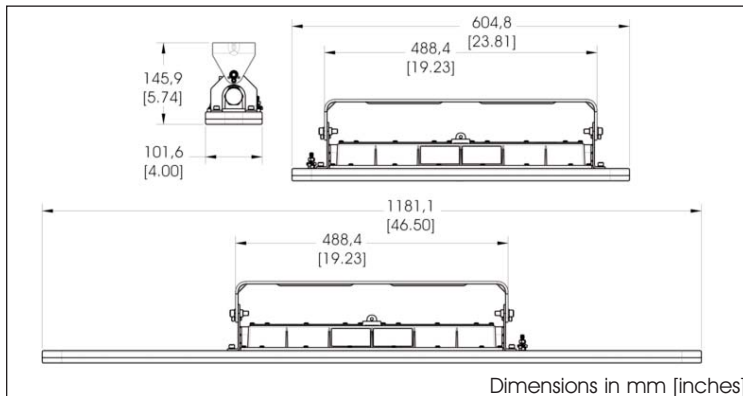




SafeSite® LED Linear Fixture ATEX / IECEx



Certifications

- Ex d e mb IIB T4 Gb (Ta = -20°C to +65°C)
- Ex tb IIIC T1 35°C Db (Ta = -20°C to +65°C)
- Certification numbers : SIRA 12ATEX1215
IECEx SIR 12.0092
- ATEX Zones 1, 21
- ATEX Zones 2, 22
- CE
- IP 66
- NEMA 4X
- RoHS compliant

Features & Benefits

- L70 rated for >100,000 hours @ 25°C
- 5 year full performance warranty
- Instant on/off operation
- Universal input (100-277V AC), 50/60Hz
- Superior colour rendition index compared to HPS, LPS, MV
- Mercury Free and lead free
- Temperature compensation technology for longer life

Application

Dialight's SafeSite® LED linear fixture replaces fluorescent lighting fixtures in hazardous areas, while providing all of the benefits of an LED fixture.

The SafeSite® LED linear fixture's rugged solid state design makes it highly resistant to shock and vibration. Its fully gasketed IP 66 enclosure makes it suitable for dusty & wet locations. The SafeSite LED linear's design allows for mounting versatility and ease of installation for many lighting applications.

Mechanical Information

Fixture Weight:	7.9 kg - 1181mm models 4.5 kg - 605mm models
Mounting:	(3) M25 openings Supplied with 2 ATEX blanking plugs Painted Aluminum (6061) Swivel bracket included

Electrical Specifications

Operating Voltage:	100-277V AC, 50/60 Hz
Power Consumption:	68W - 1181mm models 36W - 605mm models
Operating Temp:	-20°C to +65°C (-4°F to +140°F)
Harmonics:	IEC 61000-3-2
Surge Protection:	Protection devices capable of 6kV Verified up to 4kV/2ohms at an independent test laboratory

THD:	<20%
Power Factor:	>0.9

Construction

Body:	Powder coated low copper alum.
Lens:	6mm clear toughened glass or 6mm diffused toughened glass

Photometric Information

CRI:	>70
CCT:	5,000K (cool white)
IES Files:	Available upon request

All values typical unless otherwise stated

Temperature Ratings
Ambient Temperature Range
T4 Temperature Code
-20°C to +65°C (-4°F to +140°F)





SafeSite® LED Linear Fixture

Ordering Information

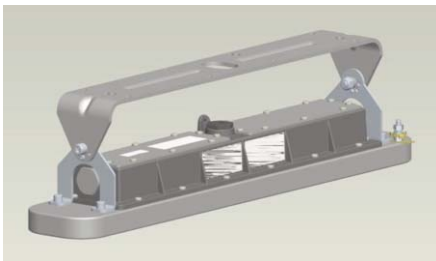
Part Number	Color	Length	Lens	Fixture Lumens	Watt	Lumens per Watt
LSA3C4M2G	CW	1181mm	clear	6,000	68	88
LSA3C4D2G	CW	605mm	clear	3,100	36	86

For a fixture with a frosted, diffused glass lens change the 9th character to a **E**. Example: part number changes from LSA3C4M2**G** to LSA3C4M2**E**

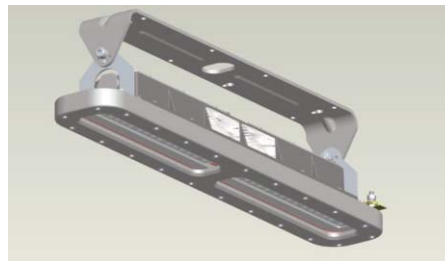
Mounting and Accessories

	Part Number	Description	Kit Includes
	HZXSAFEKIT	Stainless Steel Safety cable kit	2 Eyelets 2 Safety cables Mounting Hardware
	HZXSAFETABS	Stainless Steel Safety Tabs	2 Eyelets Mounting Hardware

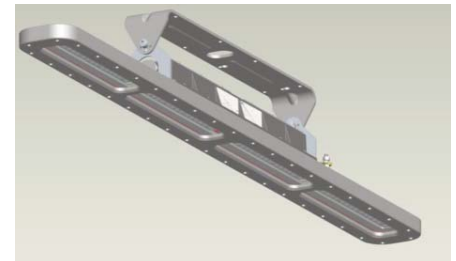
LSXW7 Mounting bracket (Included)



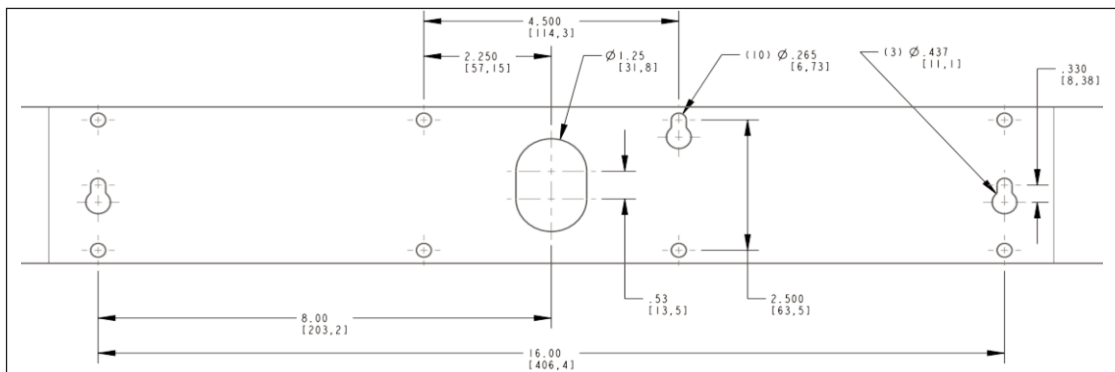
605mm with Mounting bracket



1181mm with Mounting bracket



Mounting bracket dimensions



Dialight reserves the right to make changes at any time in order to supply the best product possible. The most current version of this document will always be available at: http://www.dialight.com/Assets/Brochures_And_Catalogs/Illumination/MDTFSSHZLAX001.pdf. Warranty Statement: EXCEPT FOR THE WARRANTY EXPRESSLY PROVIDED FOR [HEREIN/ABOVE/BELOW], DIALIGHT DISCLAIMS ANY AND ALL OTHER WARRANTIES, EXPRESS OR IMPLIED, INCLUDING, WITHOUT LIMITATION, ANY WARRANTIES OF MERCHANTABILITY, FITNESS FOR A PARTICULAR PURPOSE, TITLE, AND NON-INFRINGEMENT.

www.athex.eu/dialight - info@athex.eu - Tel: +32 (0)3 653 21 82